

TRANSIENT VOLTAGE SUPPRESSOR TYPE 35A

Features

- High Surge Capability
- High Current Capability
- Low leakage

35Amp
BUTTON DIODE

Maximum Ratings

Operating Temperature: -65 °C to +175 °C
Storage Temperature: -65 °C to +175 °C

Part Number	Blocking Voltage AT I _Z		Reverse Current I _Z	Maximum Reverse Current AT [★] V _R	
	MIN	MAX		25 °C	150 °C
AR(S)3522	20V	24V	100mA	0.20uA	50uA
AR(S)3525	24V	32V	100mA	0.20uA	50uA
AR(S)3539	37V	41V	100mA	0.20uA	50uA

AR(S)3522 [★]V_R=16V

AR(S)3525 [★]V_R=20V

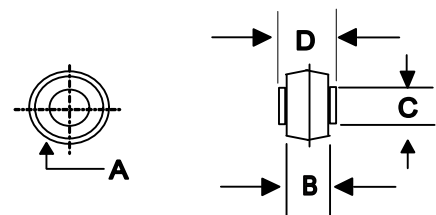
AR(S)3539 [★]V_R=28V

Electrical Characteristics @ 25 °C Unless Otherwise Specified

Average Forward Current	I _{F(AV)}	35 A	T _C =150 °C
Peak Forward Surge Current	I _{FSM}	400A	8.3ms, Halfsine
Maximum Instantaneous Forward Voltage	V _F	1.05V	I _{FM} = 100A; T _J = 25 °C
Forward Voltage Temperature Coefficient @I _F =10mA	V _{FTC}	2mV/°C	

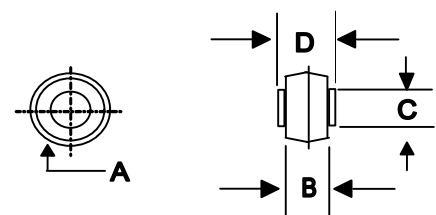
*Pulse Test: Pulse Width 300 usec, Duty Cycle 2%

BUTTON-AR



DIM	DIMENSIONS				NOTE
	INCHES		MM		
	MIN	MAX	MIN	MAX	
A	.380	.410	9.7	10.4	
B	.165	.185	4.20	4.70	
C	.215	.225	5.50	5.70	
D	.235	.250	6.00	6.40	

BUTTON-ARS



DIM	DIMENSIONS				NOTE
	INCHES		MM		
	MIN	MAX	MIN	MAX	
A	.327	.347	8.30	8.90	
B	.165	.185	4.20	4.70	
C	.215	.225	5.50	5.70	
D	.235	.250	6.00	6.40	

FIG.1- MAXIMUM FORWARD CURRENT DERATING CURVE

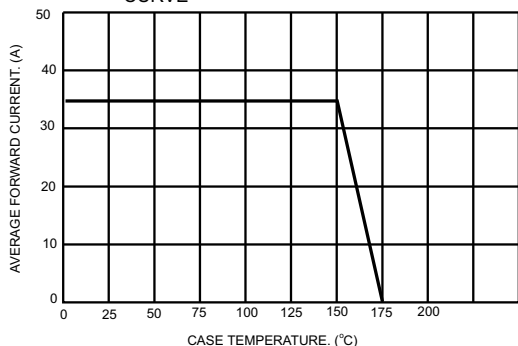


FIG.2- MAXIMUM NON-REPETITIVE PEAK FORWARD SURGE CURRENT

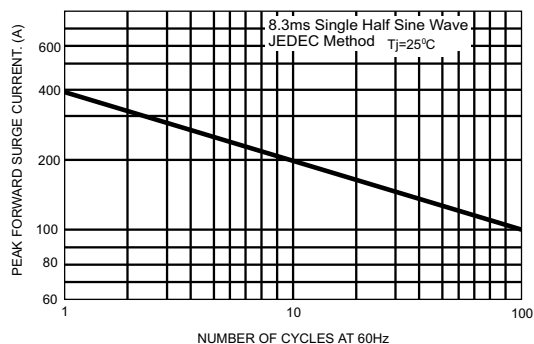


FIG.3- TYPICAL FORWARD CHARACTERISTICS

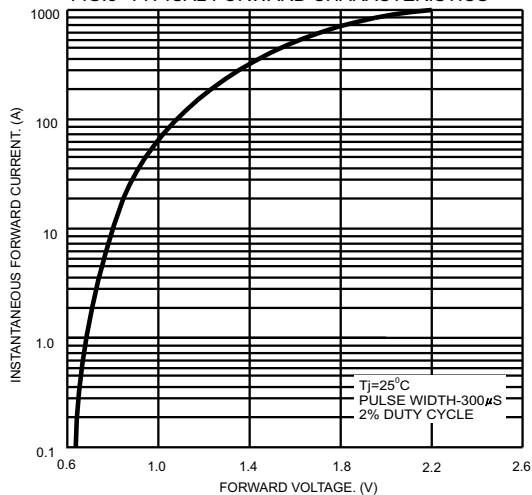


FIG.4-TYPICAL CAPACITANCE VS STAND-OFF VOLTAGE

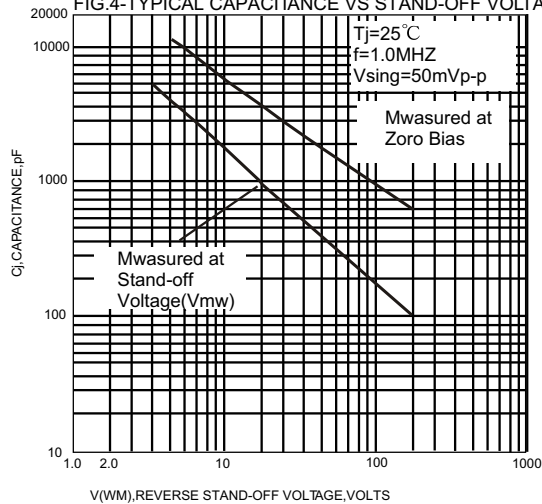


FIG.5-PULSE WAVEFORM

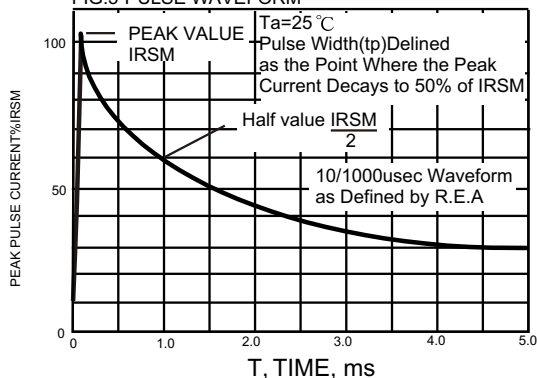


FIGURE 6- PULSE RATING CURVE

